

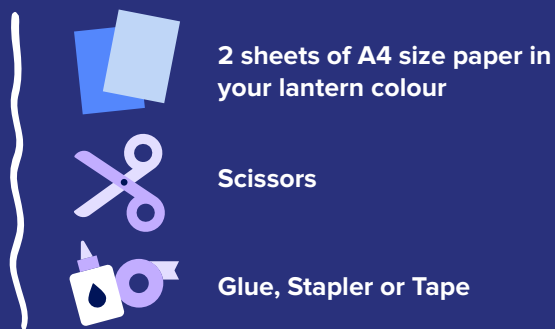
# Light the Night



## How to make a paper lantern

Follow these easy steps to create your very own lantern.

### What you'll need

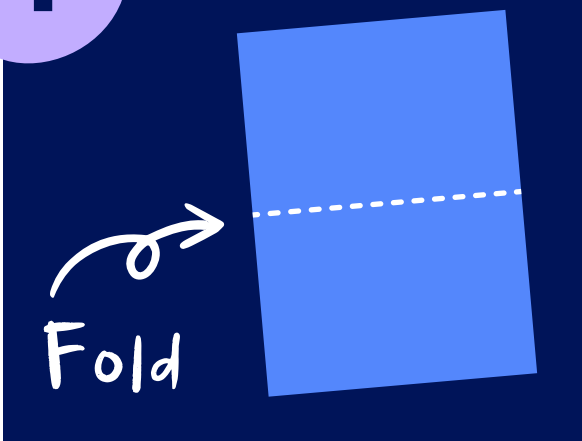


### Lantern meaning

White to reflect  
Gold to remember  
Blue to support

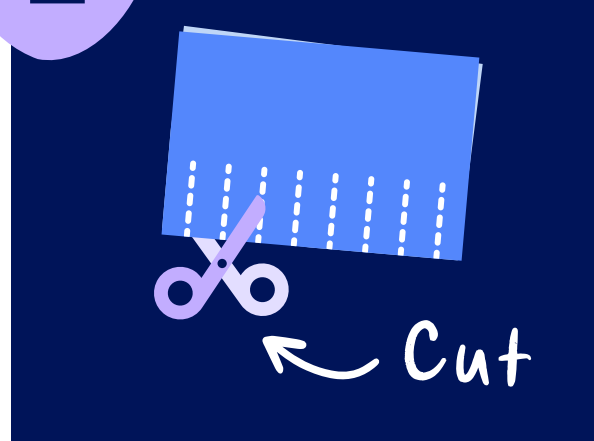


1



Take a piece of paper and fold it in half horizontally.

2



Cut along the folded edge of the paper. However, be sure not to cut all the way through!

PRINCIPAL  
PARTNER



CREATIVE  
PARTNER

KOJO

LOGISTICS  
PARTNER

SIMON  
National Carriers

KEY  
PARTNER



KEY  
PARTNER

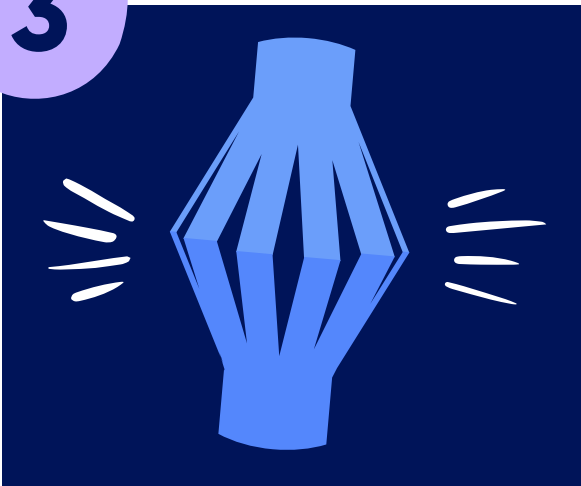


Leukaemia  
Foundation®

# Light the Night

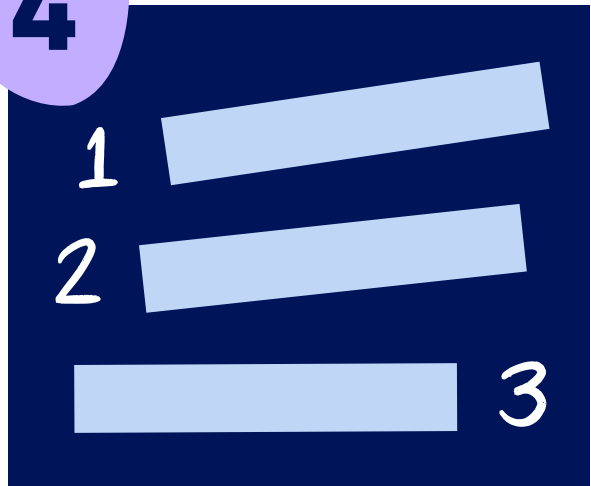


3



Open the page, take the ends and connect them to make a cylinder shape. If using tape, be sure to connect the ends from the inside so it is not visible.

4



Cut three thin strips from your second piece of paper. One will be your handle, the remaining two will be your decoration banners.

5



Attach the handle to the top of the lantern. Attach the banners at the top (near the handle) and at the base of your lantern.

6



(Optional) Decorate your lantern or write a personal message.

PRINCIPAL  
PARTNER



CREATIVE  
PARTNER

KOJO

LOGISTICS  
PARTNER

SIMON  
National Carriers

KEY  
PARTNER



KEY  
PARTNER



Leukaemia  
Foundation®